

Suppressive Effect of Leukotriene Antagonists on Capsular Contracture in Patients Who Underwent Breast Surgery with Prosthesis: A Meta-Analysis

Yuanliang Wang, M.D.
Jing Tian, M.D.
Jianshu Liu, M.D.

Zunyi, Guizhou, People's Republic of
China; and Heidelberg, Germany

Background: Capsular contracture is a troublesome and distressing complication in mammoplasty or breast reconstruction involving a prosthesis. Previous studies have indicated that leukotriene antagonists effectively reverse capsular contracture. However, this treatment method lacks comprehensive support from evidence-based medicine and remains considerably controversial. In this study, a meta-analysis was conducted to evaluate the therapeutic and preventive effects of leukotriene antagonists on capsular contracture in patients after breast prosthesis implantation.

Methods: A comprehensive literature search was performed in English and Chinese databases. All clinical studies assessing the therapeutic and prophylactic effects of leukotriene antagonists on capsule contracture after breast prosthesis implantation were selected. Risk differences and 95 percent confidence intervals were applied as the final pooled statistics.

Results: A total of five eligible studies were included, involving 1710 breast prosthesis implantations. The final results indicated that leukotriene antagonists markedly inhibited capsular contracture formation, with statistical significance at 32.02 ($p < 0.001$) (pooled risk difference, 0.84; 95 percent CI, 0.79 to 0.89). In subgroup analysis, subgroups based on different leukotriene antagonists included the montelukast and zafirlukast groups, with significant pooled statistical levels of 19.34 ($p < 0.001$) and 79.48 ($p < 0.001$), respectively (montelukast: pooled risk difference, 0.83; 95 percent CI, 0.75 to 0.92; zafirlukast: pooled risk difference, 0.85; 95 percent CI, 0.83 to 0.87), indicating that both montelukast and zafirlukast were effective in inhibiting encapsulation.

Conclusions: This meta-analysis demonstrated that leukotriene antagonists (montelukast and zafirlukast) have significant effects in treating and preventing capsular contracture. These medications should be administered in a reasonable and safe way. Further studies of clinical efficacy, duration, safety, and exact mechanism of leukotriene antagonists for periprosthetic capsular contracture are warranted. (*Plast. Reconstr. Surg.* 145: 901, 2020.)

In reconstructive and plastic surgery, breast surgery with prosthetic implants is a common procedure. Periprosthetic capsular contracture is one of the most troublesome and frequent complications of breast implant surgery. Its prevalence varies from 0.5 to 30 percent,¹ depending on the coating of the prosthesis, the type of prosthesis

used, the planar placement of the prosthesis, precautions taken intraoperatively and postoperatively, and possibly other as-yet-unidentified contributing factors. Despite increased application of best surgical practices and textured devices leading to reduced rates of capsular contracture, the latter remains the cause of reoperation and most common complications after breast implant surgery.²

To date, the exact pathogenesis of capsular contracture remains unknown, and the process

From the Departments of Plastic Surgery and Anesthesiology, Affiliated Hospital of Zunyi Medical University; and Universitätsklinikum Heidelberg.

Received for publication November 8, 2018; accepted April 25, 2019.

Jing Tian and Jianshu Liu contributed equally to this work. Copyright © 2020 by the American Society of Plastic Surgeons

DOI: 10.1097/PRS.00000000000006629

Disclosure: None of the authors has a financial interest in any of the products, devices, or drugs mentioned in this article.

appears to be caused by multiple factors,³ with the participation of different cells such as myofibroblasts, mast cells, polymorphonuclear leukocytes, and macrophages.⁴ Several studies have shown that myofibroblasts play an important role in the development of capsule contracture through interactions with growth factors and cytokines.⁵

Clinical presentation of capsular contracture includes hard breast, breast pain, and breast firmness, occasionally with visible distortion, depending on the degree of contracture.¹

Capsule contracture can be treated surgically, by a capsulotomy or cystectomy with implant replacement. Other measures include nonsteroidal anti-inflammatory drugs, chemotherapeutics, external ultrasound, and so on.⁶ Recent preliminary studies suggested the use of leukotriene antagonists to prevent capsule contracture.^{7,8} Montelukast (Singular; Merck, Kenilworth, N.J.) and zafirlukast (Accolate; AstraZeneca, Wilmington, Del.), which are both approved by the U.S. Food and Drug Administration for the treatment of asthma,^{9,10} reportedly inhibit cysteinyl leukotrienes (leukotrienes C4, D4, and E4) and suppress myofibroblasts, both of which are presumed factors related to contracture.^{4,8,10} In 2002, Schlesinger et al.⁸ proposed the application of zafirlukast in the treatment and prevention of capsular contracture after breast augmentation surgery. Since then, leukotriene antagonists have been applied as off-label prescriptions to treat or prevent capsular contracture formation.

However, to date, no evidence-based studies have investigated the efficacy of leukotriene antagonists in the treatment or prevention of capsule contracture. The purpose of this meta-analysis was to evaluate the effectiveness of leukotriene antagonists in the prevention and treatment of capsule contracture in patients who underwent breast prosthesis surgery.

METHODS

Systematic Literature Search

A literature search was performed in online databases, including PubMed, EMBASE, Google Scholar, Web of Science (ISI), Cochrane Central Register of Controlled Trials (CENTRAL), China National Knowledge Infrastructure Database (CNKI), Chinese Scientific Journals Full-Text Database (VIP), Wanfang Database, and SinoMed (CBM), using the following search strategy: (“Mammoplasty”[MeSH] OR Mammoplasties OR Mammoplasty OR Mammoplasties OR Breast Reconstructions OR Breast Reconstruction OR Reconstruction, Breast OR Reconstructions, Breast) AND (“Leukotriene

Antagonists”[MeSH] OR Receptor Antagonists, Leukotriene OR Antagonists, Leukotriene Receptor OR Leukotriene Receptor Antagonists OR Antagonists, Leukotriene OR “montelukast”[MeSH] OR MK 0476 OR MK-0476 OR Singulair OR montelukast sodium OR montelukast sodium OR sodium 1-(((1-(3-(2-(7-chloro-2-quinolinyl)ethenyl)phenyl)-3-(2-(1-hydroxy-1-methylethyl)phenyl)propyl)thio)methyl)cyclopropylacetate OR “zafirlukast”[MeSH] OR 4-(5-cyclopentylloxycarbonylamino-2-methylindol-3-yl-methyl)-3-methoxy-N-O-tolylsulfonylbenzamide OR Olmoran OR ICI 204,219 OR ICI-204219 OR ICI 204219 OR Accolate OR Aeronix) AND (“Implant Capsular Contracture”[MeSH] OR Capsular Contracture, Implant OR Contracture, Implant Capsular). All searches were conducted using MeSH and free terms.

This study followed the principles of Preferred Reporting Items for Systematic Reviews and Meta-Analyses (PRISMA) (www.prisma-statement.org). As this was an analysis of previously published articles, participant informed consent and ethical approval were not required.

Inclusion Criteria

Inclusion criteria were as follows:

1. Participants: Subjects who underwent aesthetic and reconstructive breast surgery with prosthesis were included.
2. Intervention: Leukotriene antagonists were used for therapeutic or preventive purposes.
3. Comparison: Patients did not receive prophylactic or therapeutic doses of leukotriene antagonists.
4. Outcome: The therapeutic and preventive effects of leukotriene antagonists on capsular contracture were measured.
5. Study: Randomized controlled trials or cohort studies were included.
6. Methodology: The modified Baker grade scale¹¹ was used as the end diagnostic criteria, as follows.
 - Grade 1: Implant undetectable, breast entirely natural;
 - Grade 1.5: Prosthesis detectable by physical examination, breast soft;
 - Grade 2: Prosthesis not detectable by examiner or the patient, mild breast firmness;
 - Grade 2.5: Prosthesis detectable by examiner but not the patient, mild breast firmness;
 - Grade 3: Prosthesis detectable by the patient, breast moderately firm;
 - Grade 4: Prosthesis obvious from observation, with pain, severe breast firmness.

Patients with modified Baker grade 1.5 to 4 contracture were categorized as having capsular contracture. Patients not changing or remaining with Baker grade 1 were considered effective for prophylactic use of leukotriene receptor antagonists. Responses were scored as partial (reduction in capsular contracture index by 0.5) and complete (return to modified Baker grade 1), which indicates effective treatment.⁴

Exclusion Criteria

Exclusion criteria were as follows:

1. Case reports, duplicated publications, systematic reviews, reviews, letters, and animal/in vitro studies were excluded.
2. Studies not based on the Baker grade classification were excluded.

Selection and Data Extraction

The included reports were carefully reviewed for first author, year of publication, mean patient age, number of positive events, number of total events, positive rate and standard error, leukotriene antagonist category, duration of treatment, follow-up time and follow-up rate, implant materials, implant pocket placement, incision types, study design, type of surgery, implant size, complications, and adverse effects (Table 1). Data extraction was performed independently by two reviewers. Any discrepancies were resolved by discussion or consultation with a third reviewer.

Quality Assessment

Quality assessment of included randomized controlled trials was conducted with the Cochrane quality assessment criteria.¹² The Newcastle-Ottawa quality assessment scale was used to evaluate the included cohort studies.¹³ Two reviewers independently performed the quality assessment of the included literature. Any disagreements were resolved by discussion or consultation with a third researcher.

Statistical Analyses

The meta-analysis of the extracted data was performed by using a pooled random effects model. The pooled parameters were risk difference and 95 percent confidence interval, and $p < 0.05$ was considered statistically significant. The chi-square test was used to evaluate heterogeneity, whose impact on the meta-analysis was assessed using the I^2 statistic. A value of $p < 0.10$ was considered to indicate significant heterogeneity. I^2 values of 25 percent, 50 percent, and 75 percent were regarded as low,

moderate, and high heterogeneity, respectively.¹⁴ When significant heterogeneity was observed ($p < 0.10$ or $I^2 > 50$ percent), a random effects model was used to determine the summary risk difference and the corresponding 95 percent confidence interval; otherwise, a fixed effects model was employed. The funnel plot was used to assess potential publication bias graphically.

To determine the source of heterogeneity and the influences of different leukotriene antagonists on pooled effects, subgroup analysis was performed based on the used leukotriene antagonists (montelukast and zafirlukast groups).

Sensitivity analysis was performed by excluding the included studies one by one to confirm the stability of the outcomes. Whether one study had a significant impact on the pooled effect was determined by the following strategy: after one study was deleted, the point estimate of the pooled effect was changed significantly compared with the 95 percent confidence interval of the total pooled effect.

The RevMan 5.3 software (Copenhagen: The Nordic Cochrane Centre, The Cochrane Collaboration, 2014) was applied in this meta-analysis.

RESULTS

Included Studies

A total of 68 publications [PubMed, $n = 19$; EMBASE, $n = 11$; Google Scholar, $n = 27$; Web of Science (ISI), $n = 11$; Cochrane Central Register of Controlled Trials (CENTRAL), $n = 0$; China National Knowledge Infrastructure Database (CNKI), $n = 0$; Chinese Scientific Journals Full-Text Database (VIP), $n = 0$; Wanfang Database, $n = 0$; SinoMed (CBM), $n = 0$] were eventually identified through the initial database search. After duplicate publications were excluded, 39 articles (PubMed, $n = 19$; EMBASE, $n = 2$; Google Scholar, $n = 18$) remained. Based on titles and abstracts, 16 reports were excluded and 23 remained. After full-text review of the 23 publications, two case reports, five reviews, seven experimental studies, two publications in other languages, and two reports with unavailable statistics^{7,15} (we contacted the authors for the missing data, but there was no reply finally) were excluded. A total of five eligible publications were finally included^{1,4,16-18} (Fig. 1).

Study Characteristics

A total of five eligible publications were evaluated in this study, including two prospective observational studies, one retrospective observational study, and two randomized controlled trials. The total study population consisted of 866 subjects

Table 1. Characteristics of Included Studies

First Author, Year	Age (yr)	Event (breasts)	Total No. of Breasts	Positive Rate (P)	Standard Error (P)	Leukotriene Antagonists Category	Duration of Treatment	Follow-Up Time and Rate
Graf, 2015 ¹⁶	18–55 (mean, 33)	67	74	0.905	0.034	Montelukast 10 mg/day	3 mo	2 yr 100%
Huang, 2010 ¹⁷	18–61 (mean, 44.2)	17	25	0.68	0.093	Montelukast 10 mg/day	3 mo	5–36 mo (mean, 19 mo) 100%
Reid, 2005 ⁴	18–52 (mean, 34.8)	31	41	0.756	0.067	Zafirlukast 20 mg p.o. BID	3 or 6 mo	6–29 mo (mean, 16.5 mo)
Scuderi, 2006 ¹	25–54 (mean, 36 yr 9 mo)	31	36	0.861	0.058	20 mg zafirlu- kast p.o. BID	3–6 mo	8 mo to 3 yr 3 mo (mean, 1 yr 6 mo) 97.2%
Bresnick, 2017 ¹⁸	22 and 60	1288 (zafirlukast treatment, 882; mon- telukast treatment, 406)	1534 (zafirlukast treatment, 520; mon- telukast treatment, 247)	0.84	0.009	Montelukast 10 mg/day or zafirlukast 20 mg BID	3 mo	1-yr follow-up (84.8% of zafirlukast patients, 82.2% of montelukast patients)

with 1710 implanted breast prosthesis, and the follow-up time varied from 5 to 36 months in individual studies. Among these studies, 303 patients (593 implanted breast prosthesis) received montelukast (Singulair) treatment, while 563 (1117 implanted breast prosthesis) received zafirlukast (Accolate) treatment. The duration of treatment varied from 3 to 6 months (Table 1).

Quality Evaluation

The Cochrane quality assessment criteria were used to evaluate the two included randomized controlled trials.¹³ Both randomized controlled trials showed a low risk of bias (Fig. 2).

The Newcastle-Ottawa scale was adopted to evaluate the three cohort studies (Table 2). The results showed that studies were all rated greater than six stars, showing low risk of bias.

All funnel plots were symmetrical, indicating no significant publication bias, although the number of included studies was small.

Synthesis of the Results

As shown in Figure 3, overall efficiency was obtained based on the two randomized controlled trials and three cohort studies involving 1710 implanted breast prosthesis; 303 patients (593 implanted breast prosthesis) received montelukast

Implant Materials (no. of patients)	Implant Pocket Placement (no. of patients)	Incision Type (no. of patients)	Study Design	Type of Surgery (no. of patients)	Implant Size (cc)	Complications and Adverse Effects (no. of patients)
Silicone, textured (all)	Subfascial plane (65), subglandular plane (15), and submuscular (2)	Inframammary fold incision (37), periareolar approach (16), inverted T (14), axillary (10), vertical scar (4)	RCT	Breast augmentation (51), mastopexy with prosthesis (25), exchange of mammary prosthesis (6)	150–495 (average, 279)	Suture dehiscence (10), prosthesis exposure (1), seroma (1), prosthesis rupture (1), galactorrhoea (1), lymphatic cyst in the armpit (1)
Silicone implant (18), saline implant (1), smooth	Implants placed subpectorally (6), placed in the submammary plane (13)	Periareolar (7), crescent mastopexy (3), Binelli (1), inframammary (5), vertical mastopexy (1), Wise pattern (2)	Retrospective observational study	Primary augmentation (2), breast reconstruction (1), implant exchange (4), capsulotomy (2), secondary revision surgery with capsulectomy (10)	250–700 (average, 450)	
Saline, smooth (41 breasts)	Submuscular (41 breasts)		Prospective observational study	Breast augmentation (23)	230–430 (mean, 318)	
Cohesive silicone (17), round double-lumen implant filled with silicone gel and saline solution (10), silicone (9), textured		Inframammary approach (12), retromuscular pocket location (8; 12 prostheses)	Prospective observational study	Augmentation mastoplasty (8), replacement after breast augmentation (4), mammary reconstruction (8)		Hypertension (1)
Silicone implants, smooth (all)		Periareolar (72%) or inframammary (28%) approaches	RCT	Breast augmentation (767)		Headache, gastrointestinal symptoms, fatigue, rash, vivid dreams, insomnia, headache, mood changes, muscle pain

(Singulair) treatment, while 563 patients (1117 implanted breast prosthesis) received zafirlukast (Accolate) treatment). The meta-analysis results were pooled based on capsular contracture conditions at last follow-up. The pooled risk difference was 0.84 and the corresponding 95 percent confidence interval was 0.82 to 0.86, showing statistical significance at 32.02 ($p < 0.001$),¹⁹ which indicates that leukotriene antagonists significantly inhibited capsular contracture formation.

Subgroup Analysis

Subgroup analysis was performed based on different leukotriene antagonists. Both montelukast (pooled risk difference, 0.83; 95 percent CI,

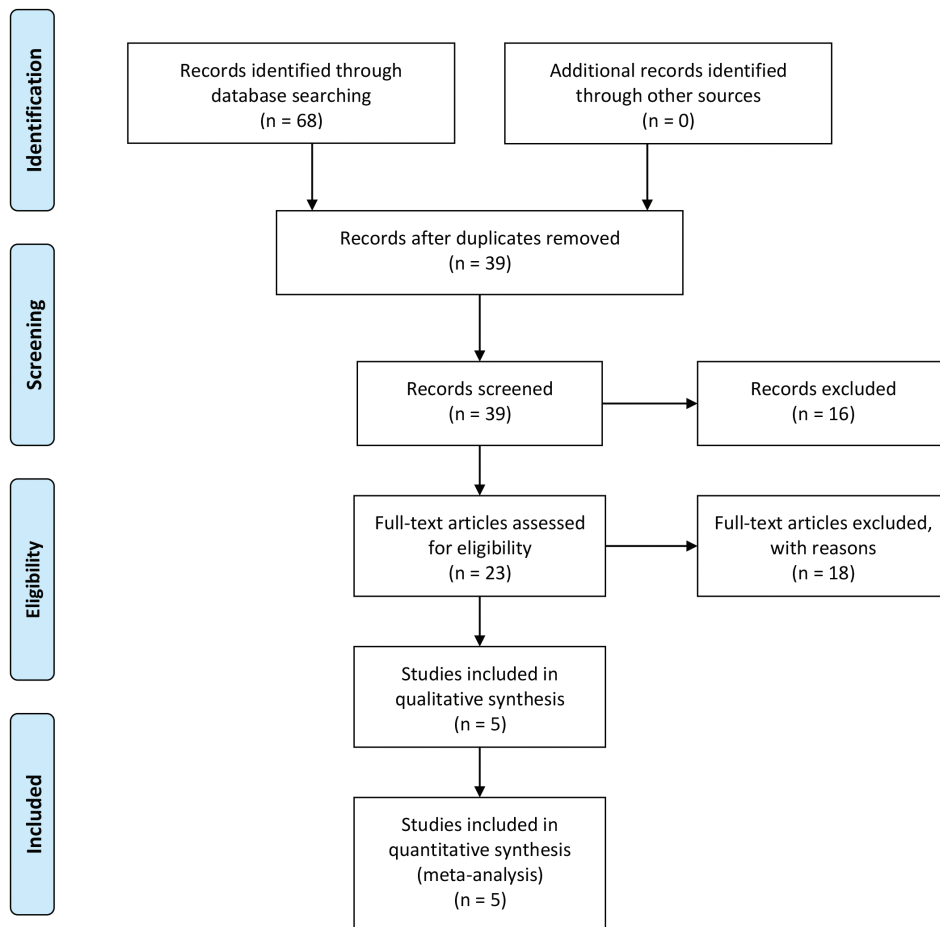
0.75 to 0.92) and zafirlukast (pooled risk difference, 0.85; 95 percent CI, 0.83 to 0.87) groups exhibited significant differences at 19.34 ($p < 0.001$) and 79.48 ($p < 0.001$), respectively. The results of each subgroup indicated that both montelukast and zafirlukast could effectively prevent capsular contracture formation after breast prosthesis implantation. The details of the subgroup analysis are shown in [Figure 4](#).

Risk of Bias

The two randomized controlled trials showed a low risk of bias ([Fig. 2](#)), with Newcastle-Ottawa scale quality assessment scores ranging from 7 to 8 ([Table 2](#)). As shown in [Figure 5](#), funnel plots



PRISMA 2009 Flow Diagram



From: Moher D, Liberati A, Tetzlaff J, Altman DG, The PRISMA Group (2009). Preferred Reporting Items for Systematic Reviews and Meta-Analyses: The PRISMA Statement. *PLoS Med* 6(7): e1000097. doi:10.1371/journal.pmed1000097

For more information, visit www.prisma-statement.org.

Fig. 1. Study flowchart. *PRISMA*, Preferred Reporting Items for Systematic Reviews and Meta-Analyses.

were symmetrical, indicating no significant publication bias, although the number of included studies was small.

Sensitivity Analysis

After deleting the included articles one by one, all the estimates fell inside the 95 percent confidence interval of total pooled effect and were not changed significantly compared to the 95 percent confidence intervals of the total pooled effects (Table 3). Thus, sensitivity in the present study had good robustness.

DISCUSSION

Capsular contracture is the most common complication involved in both reconstructive and

cosmetic breast implant surgery. Some advances, such as submuscular placement and inframammary incision, and textured devices are helpful in the reduction of capsular contracture. Nevertheless, despite these advances, a significant number of women suffer from capsular contracture after breast implant surgery and live with deformities, discomfort, and/or asymmetry, or require revision surgery. Periprosthetic capsular contracture remains the major drawback of implant use, which is very frustrating for patients and surgeons.²⁰

Its precise mechanism is unknown,²¹ and several theories have attempted to explain the cause of capsular contracture. It is known that there are probably some factors triggering inflammation within and around the pocket created to envelop

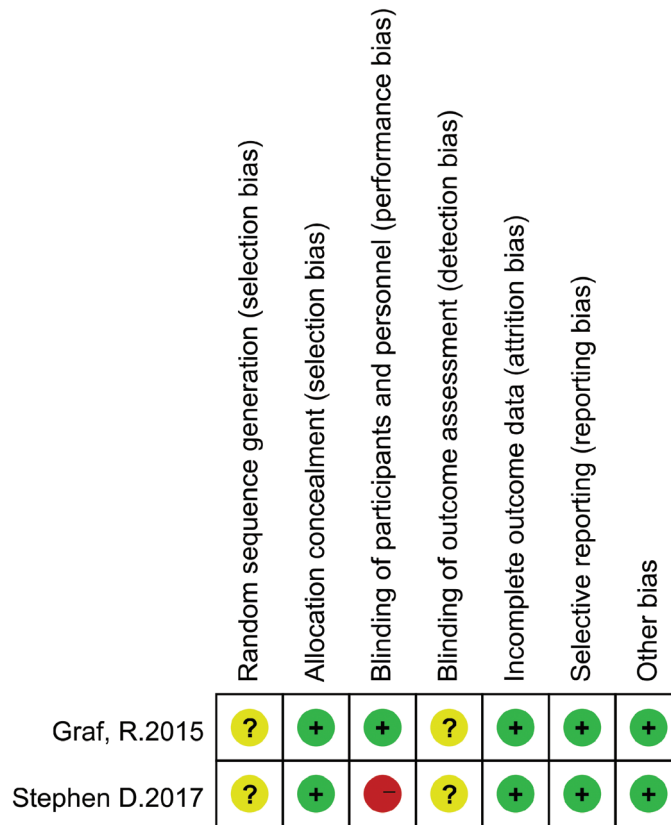


Fig. 2. Risk of bias assessment for randomized controlled trials.

the prosthesis. The cause of capsular contracture is multifactorial, including implant surface texture,^{22,23} anatomic placement,²⁴ bacterial contamination,²⁵ and intraoperative complications, such as accumulation of blood and fluid around the prosthesis. Any of these factors may induce an inflammatory

response, resulting in periprosthetic fibrosis.²⁶ In the process of fibrosis, myofibroblasts play an essential role in the development of capsular contracture by interacting with growth factors and cytokines.⁵

The current recommendations for capsular contracture treatment are breast massage, steroids,

Table 2. The Newcastle-Ottawa Scale Quality Assessment for Cohort Studies

First Author, Year	Selection	Comparability	Outcomes	Total	Quality
Huang, 2010 ¹⁷	4 stars	1 star	3 stars	8 stars	Good
Reid, 2005 ⁴	4 stars	1 star	2 stars	7 stars	Good
Scuderi, 2006 ¹	3 stars	1 star	3 stars	7 stars	Good

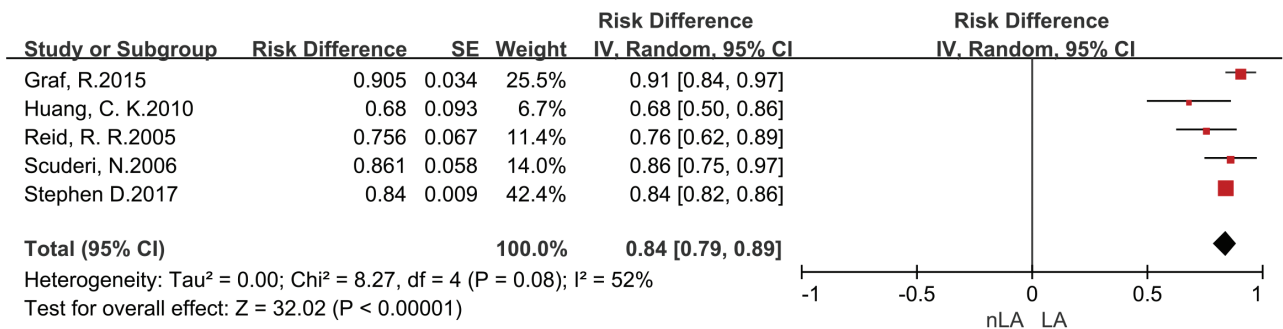


Fig. 3. Overall efficiency rates of capsular contracture prevention in patients receiving a leukotriene antagonist (LA) (after treatment) or not (before treatment) (random effects model).

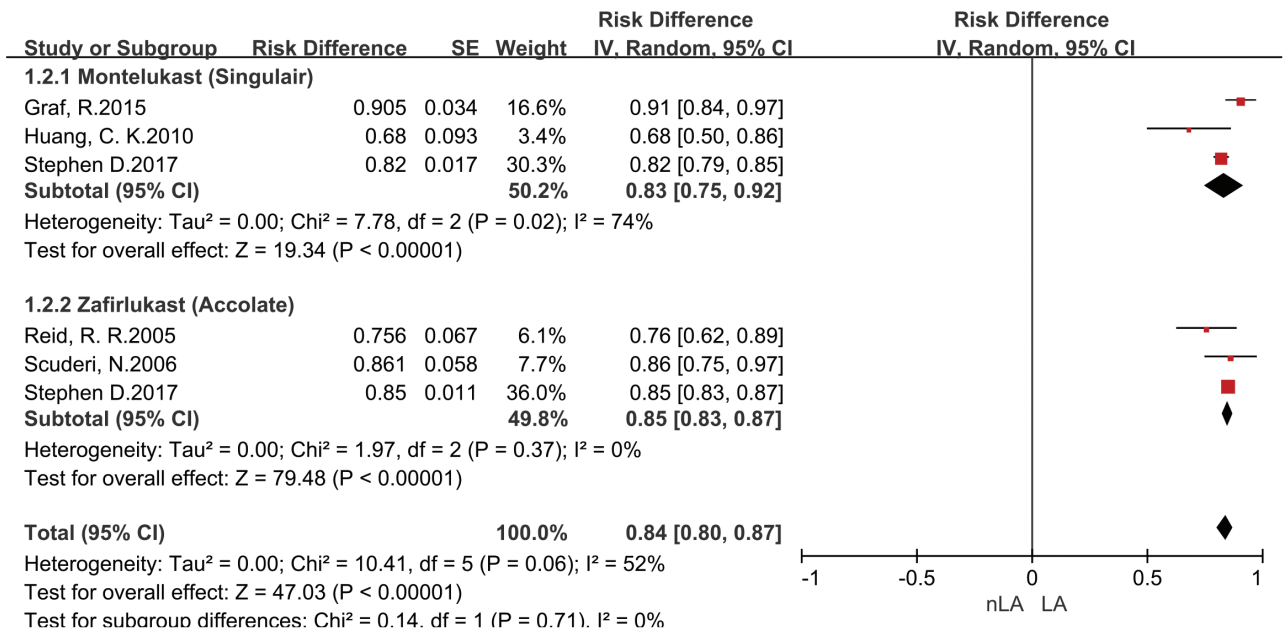


Fig. 4. Efficient rates of capsular contracture prevention in patients receiving a leukotriene antagonist (LA) (after treatment) or not (before treatment) (random effects model).

nonsteroidal anti-inflammatory drugs, external ultrasound, chemotherapeutic agents, and lastly surgical intervention, including capsulotomy or capsulectomy with implant replacement.¹⁶ However, even surgery does not guarantee a successful outcome. It is widely believed that the best treatment option for capsular contracture is prevention.^{27,28}

Pharmacologic inhibition of inflammation has become the focus of research in the prevention and treatment of capsular contracture. Several studies indicated that leukotriene antagonists, specifically montelukast and zafirlukast, could be an option for the prevention and/or treatment of capsular contracture.⁶ Leukotriene antagonists play an important role in inhibiting cysteinyl leukotrienes (leukotrienes C4, D4, and E4 are associated with the inflammatory process, smooth muscle contraction, and cellular contraction), and there is a presumed suppressive effect on contraction of myofibroblasts. Thus, the latter act by preventing severe fibrotic reactions and altering the inflammatory cascade associated with capsular contracture.¹

Zafirlukast (Accolate) competitively inhibits three different leukotrienes (C4, D4, and E4), compared with montelukast (Singulair), which inhibits only leukotriene D4.^{29,30} Thus, zafirlukast may offer a more robust effect in inhibiting the encapsulation process.¹⁸

The pooled outcomes in the present study indicated that leukotriene antagonists have significant inhibitory effects on capsular contracture formation after breast prosthesis implantation.

Importantly, leukotriene antagonists were well tolerated without severe complications reported. Our conclusion is consistent with those of previous studies,^{1,4,16–18} and the evidence in the present study is more convincing.

According to subgroup analysis, montelukast (pooled risk difference, 0.83; 95 percent CI, 0.75 to 0.92; *p* < 0.01) and zafirlukast (pooled risk difference, 0.84; 95 percent CI, 0.78 to 0.89) resulted in statistically significant differences in inhibiting capsular contracture after breast prosthesis implantation, indicating that both montelukast and zafirlukast have inhibitory effects on encapsulation.

We do not advocate the use of leukotriene antagonists in patients undergoing breast implant surgery as a routine prophylactic treatment. We recommend that administration of leukotriene antagonists should be considered in the following situations^{1,4,16–18,31–34}:

- Patients with a history of capsular contracture, breast reconstructive surgery patients with a history of breast cancer,³⁴ previous breast radiotherapy, or a tendency to develop hypertrophic scars;
- Patients with high risk factors for capsular contracture, including implant features (smooth surface and small size ≤355 cc), surgical factors (periareolar incision, subglandular placement, antibiotic irrigation),^{31–34} and other risk factors, such

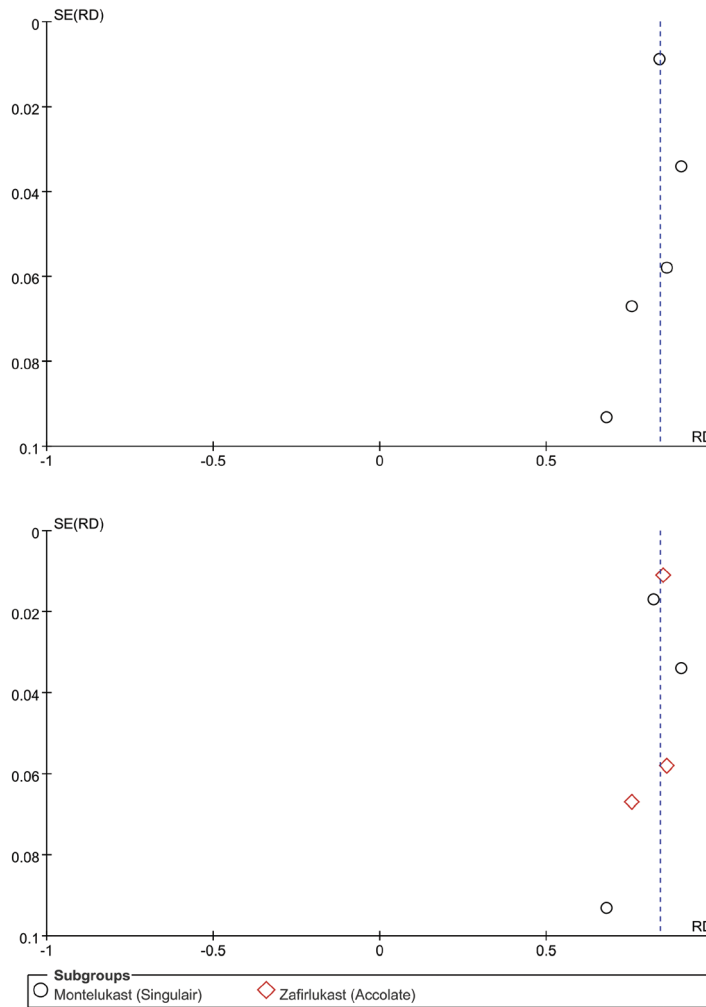


Fig. 5. Funnel plot for publication bias assessment.

as development of hematoma or seroma, periprosthetic infection, surgical bra usage, and so on^{31,32,34};

- Patients with limited implant movement, reduced pocket dimensions on implant displacement, and reduced implant compliance before a diagnosed capsular contracture;
- Patients with established capsular contracture but who are not surgical candidates or who have no desire for surgical intervention.

Table 3. Sensitivity Analysis

Study Omitted	Estimate	Risk Difference (95% CI)	<i>P</i>
Graf, 2015 ¹⁶	0.82	0.76–0.87	35%
Huang, 2010 ¹⁷	0.85	0.81–0.89	43%
Reid, 2005 ⁴	0.85	0.80–0.90	55%
Scuderi, 2006 ¹	0.83	0.77–0.90	63%
Bresnick, 2017 ¹⁸	0.82	0.73–0.92	62%

Many surgeons believe that the best treatment option for capsule contracture is prevention. Early and preventive interventions appear to be the best ways to reduce the incidence of significant capsule contracture.^{8,27,28} Thus, we suggest that the prophylactic use of leukotriene antagonist should be administered immediately postoperatively. The leukotriene antagonist therapy of established capsular contracture should be started early. Zafirlukast is commonly administered orally, twice a day at a dose of 20 mg, and montelukast once a day at a dose of 10 mg. In the five articles analyzed, the leukotriene inhibitor therapy was used for between 3 and 6 months. However, whether this is overtreatment or not is uncertain. We think that within these studies, 3 months of treatment was effective, but it is as yet unknown what the minimum length of therapy might be to achieve the desired reduction in capsular contracture. More clinical trials are needed to further identify the indications and reasonable duration

of leukotriene antagonists for the prevention or treatment of capsular contracture, and ultimately reach a consensus.

Possible side effects of montelukast are headache, flu, abdominal pain, cough, and dyspepsia.¹⁶ The most common adverse effects of zafirlukast are headache, nausea, and, rarely, liver failure.¹ Patients should be counseled preoperatively about the potential benefits and risks of therapy, as well as the need to monitor transaminase levels (although liver failure is rare), if leukotriene antagonist therapy is to be undertaken. Contraindications for leukotriene inhibitors are hypersensitivity to this product, abnormal liver function, and pregnancy.¹⁶

Treatment of capsular contracture with leukotriene antagonists is an off-label procedure, which is generally legal and very common. However, longer follow-up studies and clinical trials are warranted to further investigate the safety, efficacy, and duration of leukotriene antagonists in the treatment and prevention of capsular contracture, and to generate additional data for approval agencies to expand indications of this class of drugs.³⁵

Limitations

Among the included publications, research subjects were breast augmentation, breast reconstruction, mastopexy, and prosthesis exchange patients. There are certain differences in these types of patients (healthy status, skin conditions, previous resection of glandular and subcutaneous tissue, and so on), which might cause heterogeneity in the pooled results. The number of participants was relatively small, and most reports were cohort studies, with only two randomized controlled trials. It is worth noting that loss to follow-up information existed in two publications^{7,15} included in this study, but the overall number of patients lost to follow-up was small. However, the sample size was large, and the included studies had good quality; thus, these differences likely did not have an impact on the pooled results.

CONCLUSIONS

This study demonstrated that leukotriene antagonists can effectively reverse capsular contracture after breast prosthesis implantation, showing significant improvements in both treatment and prevention. Leukotriene antagonists should be administered safely and reasonably in certain situations. The safety, long-term efficacy, duration, and precise mechanism by which the

leukotriene antagonists decrease or prevent capsular contracture warrant further investigation.

Jing Tian, M.D.

Universitätsklinikum Heidelberg
Im Neuenheimer Feld 672, 69120 Heidelberg,
Baden-Württemberg, Germany
j.tian@stud.uni-heidelberg.de

ACKNOWLEDGMENT

The authors would like to thank Zheng Xiao (Evidence-Based Medicine Center, MOE Virtual Research Center of Evidence-Based Medicine at Zunyi Medical University, Affiliated Hospital of Zunyi Medical University, Zunyi, Guizhou, China) for continuous support during this study.

REFERENCES

1. Scuderi N, Mazzocchi M, Fioramonti P, Bistoni G. The effects of zafirlukast on capsular contracture: Preliminary report. *Aesthetic Plast Surg.* 2006;30:513–520.
2. Barnsley GP, Sigurdson LJ, Barnsley SE. Textured surface breast implants in the prevention of capsular contracture among breast augmentation patients: A meta-analysis of randomized controlled trials. *Plast Reconstr Surg.* 2006;117:2182–2190.
3. Rieger UM, Mesina J, Kalbermatten DE, et al. Bacterial biofilms and capsular contracture in patients with breast implants. *Br J Surg.* 2013;100:768–774.
4. Reid RR, Greve SD, Casas LA. The effect of zafirlukast (Accolate) on early capsular contracture in the primary augmentation patient: A pilot study. *Aesthet Surg J.* 2005;25:26–30.
5. Embrey M, Adams EE, Cunningham B, Peters W, Young VL, Carlo GL. A review of the literature on the etiology of capsular contracture and a pilot study to determine the outcome of capsular contracture interventions. *Aesthetic Plast Surg.* 1999;23:197–206.
6. Adams WP Jr. Capsular contracture: What is it? What causes it? How can it be prevented and managed? *Clin Plast Surg.* 2009;36:119–126, vii.
7. Scuderi N, Mazzocchi M, Rubino C. Effects of zafirlukast on capsular contracture: Controlled study measuring the mammary compliance. *Int J Immunopathol Pharmacol.* 2007;20:577–584.
8. Schlesinger SL, Ellenbogen R, Desvigne MN, Svehlak S, Heck R. Zafirlukast (Accolate): A new treatment for capsular contracture. *Aesthet Surg J.* 2002;22:329–336.
9. Holgate ST, Bradding P, Sampson AP. Leukotriene antagonists and synthesis inhibitors: New directions in asthma therapy. *J Allergy Clin Immunol.* 1996;98:1–13.
10. Gryskiewicz JM. Investigation of Accolate and Singulair for treatment of capsular contracture yields safety concerns. *Aesthet Surg J.* 2003;23:98–101.
11. Spear SL, Baker JL Jr. Classification of capsular contracture after prosthetic breast reconstruction. *Plast Reconstr Surg.* 1995;96:1119–1123; discussion 1124.
12. Higgins JP, Altman DG, Gøtzsche PC, et al.; Cochrane Bias Methods Group; Cochrane Statistical Methods Group. The Cochrane Collaboration's tool for assessing risk of bias in randomised trials. *BMJ.* 2011;343:d5928.

13. Wells G, Shea B, O'Connell D, et al. The Newcastle-Ottawa Scale (NOS) for assessing the quality of nonrandomised studies in meta-analyses. Available at: http://www.ohri.ca/programs/clinical_epidemiology/oxford.asp. Accessed February 16, 2019.
14. Higgins JP, Thompson SG, Deeks JJ, Altman DG. Measuring inconsistency in meta-analyses. *BMJ*. 2003;327:557–560.
15. Mazzocchi M, Dessy LA, Alfano C, Scuderi N. Effects of zafirlukast on capsular contracture: Long-term results. *Int J Immunopathol Pharmacol*. 2012;25:935–944.
16. Graf R, Ascenço AS, Freitas Rda S, et al. Prevention of capsular contracture using leukotriene antagonists. *Plast Reconstr Surg*. 2015;136:592e–596e.
17. Huang CK, Handel N. Effects of Singulair (montelukast) treatment for capsular contracture. *Aesthet Surg J*. 2010;30:404–408.
18. Bresnick SD. Prophylactic leukotriene inhibitor therapy for the reduction of capsular contracture in primary silicone breast augmentation: Experience with over 1100 cases. *Plast Reconstr Surg*. 2017;139:379–385.
19. Yuehong C, Liang D, Xingyuan G, Guanjian L. Implement meta-analysis with non-comparative binary data in RevMan software. *Chinese Journal of Evidence-Based Medicine* 2014;14:889–896.
20. McGuire P, Reisman NR, Murphy DK. Risk factor analysis for capsular contracture, malposition, and late seroma in subjects receiving Natrelle 410 form-stable silicone breast implants. *Plast Reconstr Surg*. 2017;139:1–9.
21. Le Louarn C, Buis J, Auclair E. Flector tissugel used to treat capsular contracture after breast augmentation surgery. *Aesthetic Plast Surg*. 2008;32:453–458.
22. Wong CH, Samuel M, Tan BK, Song C. Capsular contracture in subglandular breast augmentation with textured versus smooth breast implants: A systematic review. *Plast Reconstr Surg*. 2006;118:1224–1236.
23. Spear SL, Elmaraghy M, Hess C. Textured-surface saline-filled silicone breast implants for augmentation mammoplasty. *Plast Reconstr Surg*. 2000;105:1542–1552; discussion 1553.
24. Vazquez B, Given KS, Houston GC. Breast augmentation: A review of subglandular and submuscular implantation. *Aesthetic Plast Surg*. 1987;11:101–105.
25. Burkhardt BR, Eades E. The effect of Biocell texturing and povidone-iodine irrigation on capsular contracture around saline-inflatable breast implants. *Plast Reconstr Surg*. 1995;96:1317–1325.
26. Carpaneda CA. Inflammatory reaction and capsular contracture around smooth silicone implants. *Aesthetic Plast Surg*. 1997;21:110–114.
27. Moufarrege R, Beauregard G, Bosse JP, Papillon J, Perras C. Outcome of mammary capsulotomies. *Ann Plast Surg*. 1987;19:62–64.
28. Young VL. Guidelines and indications for breast implant capsulectomy. *Plast Reconstr Surg*. 1998;102:884–891; discussion 892.
29. U.S. Food and Drug Administration. Updated information on leukotriene inhibitors: Montelukast (marketed as Singulair) 2009. Available at: <http://www.drugs.com/pro/singulair.html>. Accessed January 15, 2019.
30. U.S. Food and Drug Administration. Updated information on leukotriene inhibitors: Zafirlukast (marketed as Accolate) 2009. Available at: <http://www.drugs.com/pro/accolate.html>. Accessed January 15, 2019.
31. Stevens WG, Nahabedian MY, Calobrace MB, et al. Risk factor analysis for capsular contracture: A 5-year Sientra study analysis using round, smooth, and textured implants for breast augmentation. *Plast Reconstr Surg*. 2013;132:1115–1123.
32. Calobrace MB, Stevens WG, Capizzi PJ, Cohen R, Godinez T, Beckstrand M. Risk factor analysis for capsular contracture: A 10-year Sientra study using round, smooth, and textured implants for breast augmentation. *Plast Reconstr Surg*. 2018;141(4S Sientra Shaped and Round Cohesive Gel Implants):20S–28S.
33. Wiener TC. Relationship of incision choice to capsular contracture. *Aesthetic Plast Surg*. 2008;32:303–306.
34. Bachour Y, Bargon CA, de Blok CJM, Ket JCF, Ritt MJPF, Niessen FB. Risk factors for developing capsular contracture in women after breast implant surgery: A systematic review of the literature. *J Plast Reconstr Aesthet Surg*. 2018;71:e29–e48.
35. Stafford RS. Regulating off-label drug use—rethinking the role of the FDA. *N Engl J Med*. 2008;358:1427–1429.